



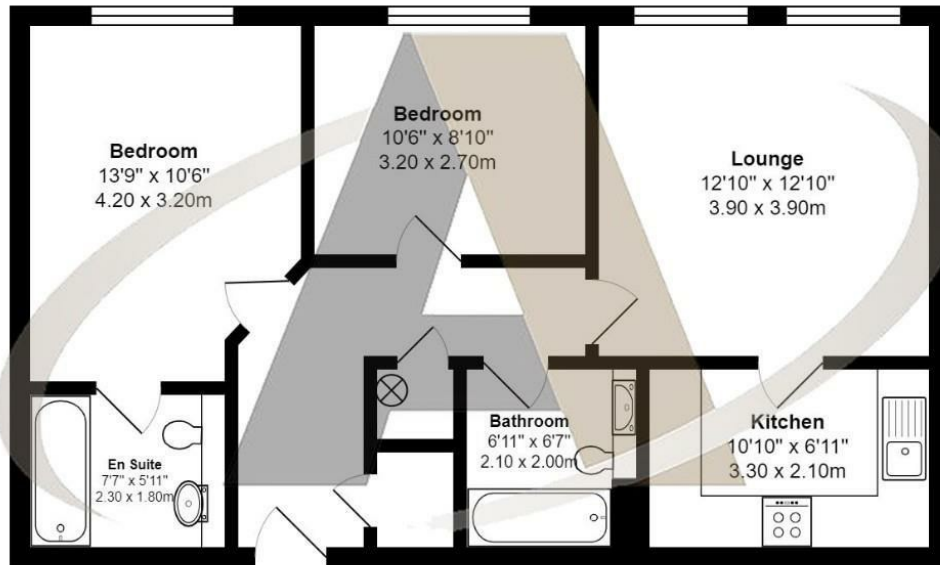
17 Silchester Court London Road
Ashford TW15 3BJ
£275,000

17 Silchester Court London Road, Ashford, TW15 3BJ

Aspen Estate Agents are delighted to introduce this stunning two-bedroom, two-bathroom apartment to the market. Situated on the second floor of the ever-popular Silchester Court this property is a must-see. The accommodation consists of two double bedrooms the larger of which has an en suite bathroom and there is a further bathroom which has just been replaced by the current owners. The lounge is a good size and there is a separate, modern kitchen which has ample worktop space, plenty of cupboards, integrated dishwasher and space for fridge freezer and washing machine. This property also benefits from having two large storage cupboards and two allocated parking spaces. Sold with no onward chain this lovely apartment should be seen to be appreciated and viewings can be booked by calling Aspen Estate Agents.



Floor Plan



Silchester Court, Ashford

Total Area: 704 ft² ... 65.4 m²

All measurements are approximate and for display purposes only

Area Map



Features

- Stunning Two Bedroom Apartment
- Brand New Bathroom
- Modern, Seperate Kitchen
- En Suite Bathroom
- Large Lounge
- No Onward Chain
- Two Allocated Parking Spaces
- Bright and Spacious

Aspen Residential Services
77 Church Road, Ashford, Surrey, TW15 2PE
Tel: 01784 252 202
Email: enquiries@aspensalesandlettings.com

